

EmissionInsight™ Quick Reference Guide

for Demo

1 Deploy an Inspection Job

By double clicking, the application is launched. There are three main tasks: deploy an inspection job, collect testing results and generate report. Pick Deploy tab to enable inspection deploying task.

EquipmentId	Plant	Model	Description	Date	Speed	CO	NO	NO2	NOx
83863	Mine01	ANFO LOADER	01-UGMATL-AN...	29/10/2012 3.1...	1047	382	470	39	598
19199	Mine01	ANFO LOADER	01-UGMATL-AN...	29/10/2012 3.0...	923	362	465	44	657
27050	Mine01	ANFO LOADER	01-UGMATL-AN...	29/10/2012 3.0...	914	387	605	33	456

1. Select testing equipment

- 1) Pick a plant from the list
- 2) Pick a model from the list
- 3) Select a piece of equipment or All to pick all equipment under this category
- 4) Press Include button to confirm selection. The equipment and the last test results are shown in the table below

2. Remove one or more selected equipment

- 1) Highlight a selected equipment in the table by clicking on the row it represents, or click with CTRL key pressed to select multiple entries
- 2) Press Remove button on the bottom left to remove the selected equipment

3. Deploy selected equipment list

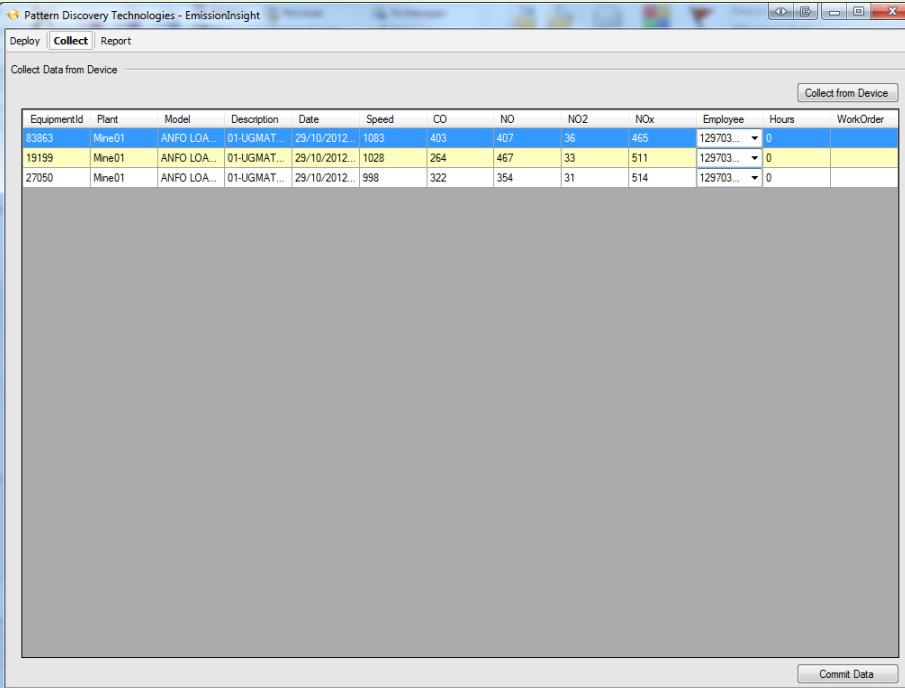
- 1) After selecting the demo equipment for simulated testing, press Deploy button which will simulate loading information to an EM-200-E device.

EmissionInsight™ Quick Reference Guide

for Demo

2 Collect Testing Results

Once an inspection job is completed, the resting results will be simulated being collected from an EM200-E to the local data repository for record keeping and report generation. After application launched, pick Collect tab to collect data. At any given time, only one person can run the application to collect testing results from EM200E device.



The screenshot shows the 'EmissionInsight' application window with the 'Collect' tab selected. The interface includes a 'Collect Data from Device' section with a 'Collect from Device' button. Below this is a table with the following data:

EquipmentId	Plant	Model	Description	Date	Speed	CO	NO	NO2	NOx	Employee	Hours	WorkOrder
83863	Mine01	ANFO LOA...	01-UGMAT...	29/10/2012...	1083	403	407	36	465	129703...	0	
19199	Mine01	ANFO LOA...	01-UGMAT...	29/10/2012...	1028	264	467	33	511	129703...	0	
27050	Mine01	ANFO LOA...	01-UGMAT...	29/10/2012...	998	322	354	31	514	129703...	0	

At the bottom right of the table area, there is a 'Commit Data' button.

1. Collect Test Results from Device

- 1) Press Collect from Device button at the top right corner to simulate the transfer of testing results from EM200E to the PC
- 2) Upon completion, a table of tested equipment with their testing results will show

2. Input Additional Information

- 1) Specify testing technician in the Employee column by selecting technician name from the drop down list. The first selection will populate all entries with the same technician, but it can be changed one at a time
- 2) Specify running hours of the equipment in the Hour column one equipment at a time
- 3) Specify work order in the Work Order Column by typing the work order number in all entries

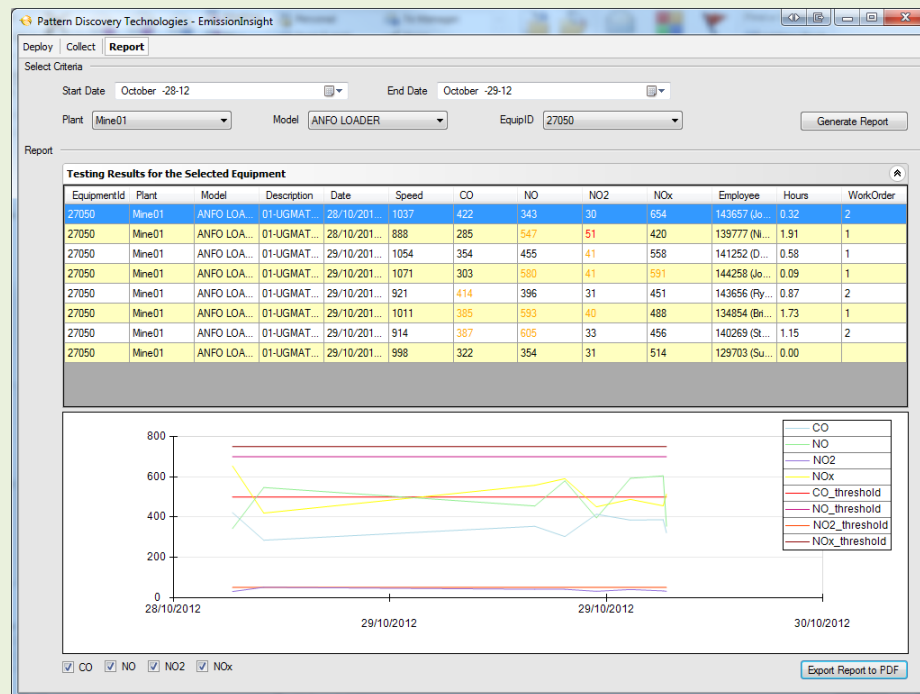
3. Commit Data to Database

- 1) Once all information is completed, press Commit Data button at the bottom right to transfer the data into the historical database

EmissionInsight™ Quick Reference Guide

for Demo

3 Generate History Report



Emission test history reports can be generated at any time by selecting Report tab after the application is launched. Unlike Deploy and Collect, more than one employee can run the application to generate reports.

1. Select an equipment and time period for reporting
 - 1) Specify a starting date and an ending date for reporting
 - 2) Pick a plant from the list
 - 3) Pick a model from the list
 - 4) Select a piece of equipment of the selected category
 - 5) Press Generate Report button at the top right corner to create the report, which contains the historical testing results of the selected equipment and a trending graph containing warning thresholds
 - 6) Testing results that are greater than the warning threshold are in red color; if they are greater than 75% of the warning level, they are in orange color
2. Remove one or more testing specimen
 - 1) By default all four testing specimen (CO, NO, NO2 and NOx) are displayed. To disable one or more of them, use the check boxes on the bottom left
3. Generate printable (PDF) report
 - 1) To save the report to a printable (PDF) file, press Export Report to PDF button on the bottom right
 - 2) Specify a file name when prompt then press OK button.

